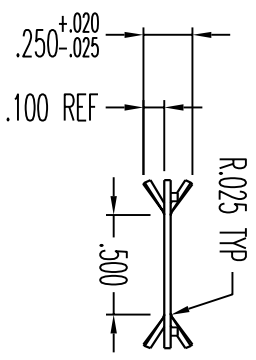
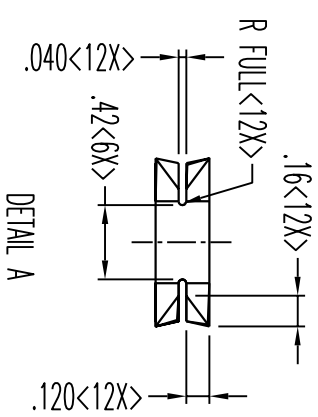
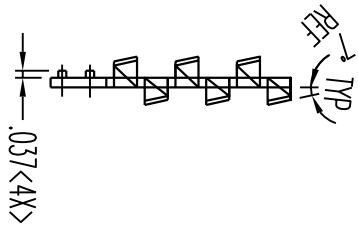
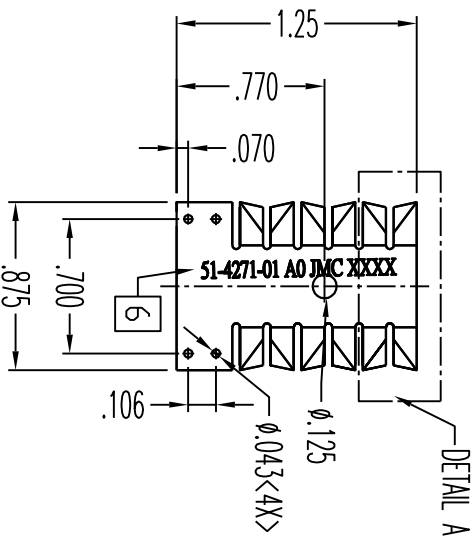


ITEM 1

REVISION		DATE		APPROVE	
REV	DESCRIPTION	DATE	EC#	MCH	MFG
A0	THIS IS PRODUCTION RELEASE	2007/08/10		XIE	BI



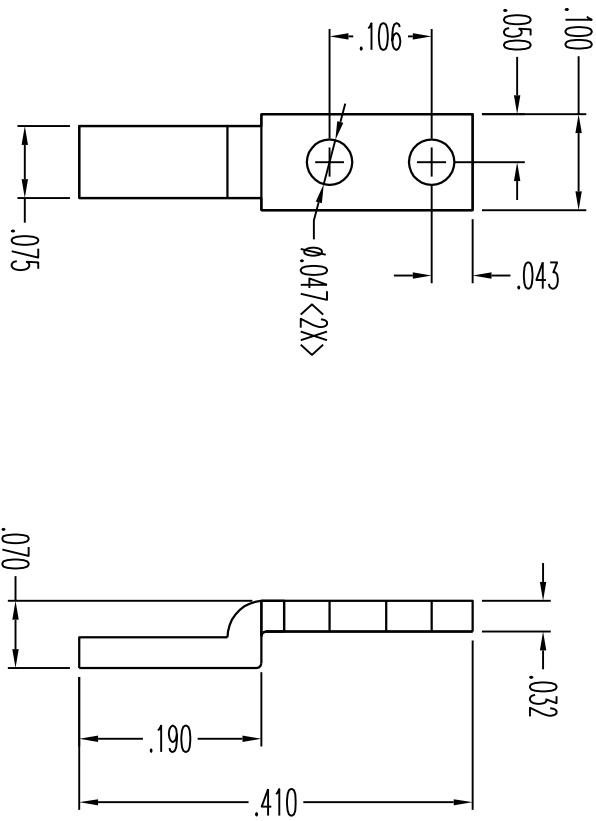
- NOTES: (UNLESS OTHERWISE SPECIFIED)
1. ALL DIMENSIONS ARE IN INCHES.
 2. REMOVE ALL BURRS AND SHARP EDGES.
 3. MATERIAL: .05" THICK AL 5052-H32
 4. FINISH: BLACK ANODIZE, ROHS COMPLIANT.
 5. THERMAL PAD MATERIAL: T-90N K52-2-0505-A1 INTERFACE.
 6. MARK PART NUMBER, REVISION, VENDOR CODE, DATE CODE.
 7. TOLERANCES, DECIMALS: .xx± 0.02
- .xxx± 0.010
 ANGLE± 2°

JanMao Industries Co., Ltd

TEL: 752-6860900 FAX: 752-6860910

Drawing No.	D01-3416-J02-C	Customer PN	51-4271-01	Checked	Unit:	Inch	Edition	REV A0
Mfg. PN	34160F3001-0A-A33-GP	Material	AL 5052-H32	Engineer	Sheet	1 Of 3	View	
Description	Headsnk: 1.25* .875* .25"	Finish	Black Anodize	Drawn	Scale:	1:1	Approval	
				He Zhong	Date	2007/08/10		

ITEM 2



- NOTES: (UNLESS OTHERWISE SPECIFIED)
1. ALL DIMENSIONS ARE IN INCHES.
 2. REMOVE ALL BURRS AND SHARP EDGES.
 3. MATERIAL: COPPER 1100.
 4. FINISH: TIN PLATED, ROHS COMPLIANT.
 5. TOLERANCES , DECIMALS : .xx± 0.02
 .xxx± 0.010
 ANGLES± 2°

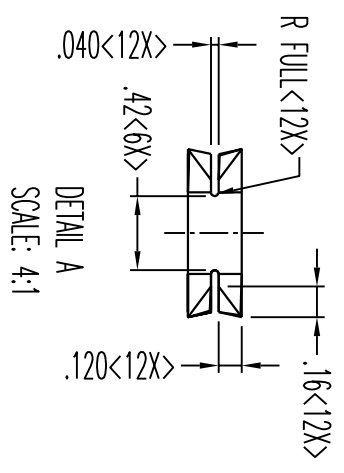
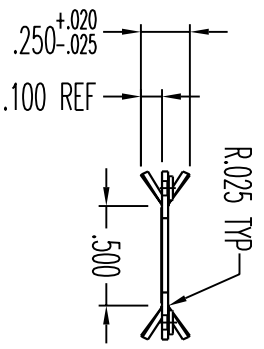
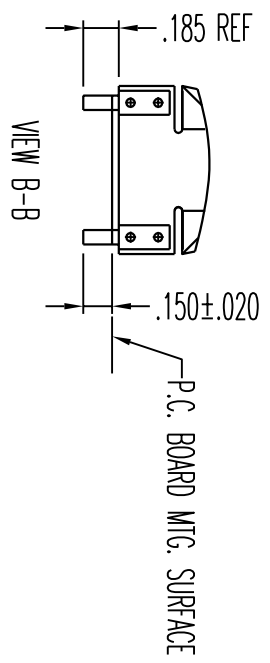
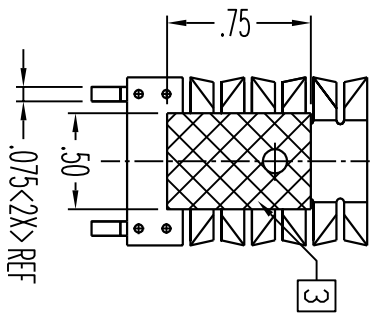
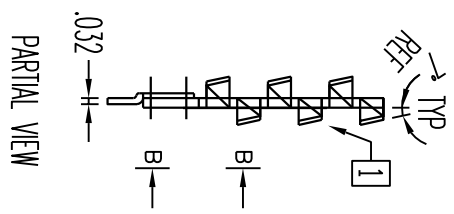
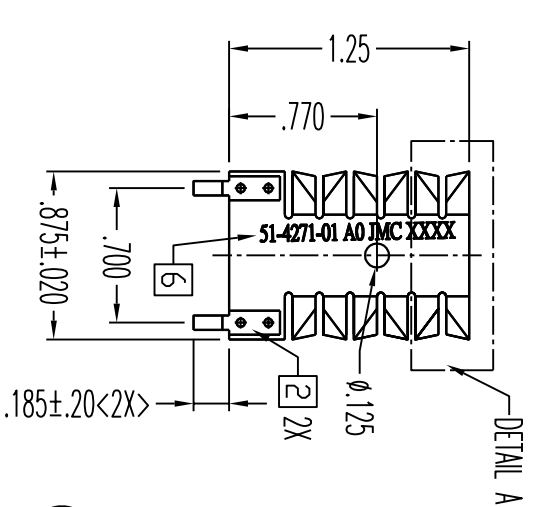
REVISION		DATE		EC#		APPROVE	
REV	DESCRIPTION	DATE	EC#	MCH	MFG		
A0	THIS IS PRODUCTION RELEASE	2007/08/10		XIE	BI		

JanMao Industries Co., Ltd

TEL: 752-6860900 FAX: 752-6860910

Drawing No.	D01-3416-J02-C	Customer PN	51-4271-01	Checked	Unit:	Inch	Edition	REV A0
Mfg. PN	34160F3001-0A-A33-GP	Material	Copper 1100	Engineer	Sheet	2 Of 3	View	
Description	PN: .10*.41*.07"	Finish	Tin Plated	Drawn	Scale:	5:1	Approval	
				He Zhong	Date	2007/08/10		

REV	DESCRIPTION	DATE	EC#	APPROVE
A0	THIS IS PRODUCTION RELEASE	2007/08/10		XIE BI



ITEM Q'TY	PART NO.	DESCRIPTION	MATERIAL OR MANUFACTURE
3	1	HEATSINK	5052-432 ALUMINUM
2	1	PIN	COPPER 1100
1	1	HEATSINK	5052-432 ALUMINUM

JanMao Industries Co., Ltd		Unit: Inch	Edition REV A0
TEL: 752-6860900 FAX: 752-6860910		Sheet 3 Of 3	Scale: 1:1
Drawing No. D01-3416-J02-C	Customer PN 51-4271-01	Checked	Approval
Mfg. PN 34160F3001-0A-A33-GP	Material	Engineer	
Description Heatsink: 1.25"*.875"*.25"	Finish	Parts List	Drawn
			He Zhong
			Date 2007/08/10

